



## **TEFMA Conference 2012**

Derry Caleb

Past Chair - Association of  
University Directors of Estates (AUDE)

September 2012



# TEFMA – AUDE 2012

## University of Surrey Location

### South East England



# TEFMA – AUDE 2012

## University of Surrey



## TEFMA – AUDE 2012

Promoting **excellence** strategic planning, development, management, operation and administration of estates and facilities

To be the **recognised representative** association for Higher Education on all Estate and Facilities Management related matters at a senior strategic level and provide expert advice when required.

To promote high standards of **professionalism** in the strategic planning, development, operation, management and administration of Higher Education Estates and Facilities.

To organise events and provide training in areas relevant to the activities of our members (**Professional Cradle to Grave**).

To enable the **sharing** of knowledge, expertise and information.

To promote the **reputation** and activities of the Association and its members regionally, nationally and internationally.



# TEFMA – AUDE 2012

- AUDE (in original guise) was formed in 1960
- Represents 155 Member Institutions including all UK Universities
- Each member is represented by the most senior member of staff responsible for estates and facilities
- Nine regional AUDE groups in the UK



# **Current Main Issues in UK Higher Education**

(relating to Facilities & Estates)



- A picture speaks a thousand words.....
- AAB grades and above lower than previous years
- Problems with Overseas student recruitment and universities compliance with immigration requirements

# What are the main issues facing UK Universities?

Understand the politics, the current market and future market

Every University going through Efficiency savings

Capital funding reduced by circa 75%

Fee change from 2012 : most Universities will charge the maximum fee. (£9k pa)

New budgeting and operational financial management regime in all Universities.

Backlog





## Key Issues for Facilities and the Estate

Student experience (& expectation)

Step change in funding of HE

Shared services

Outsourcing 'Back Office'

Carbon 'tax' equal to 7% of energy cost

Carbon reduction programs



Pressure to deliver – need to demonstrate Performance

Be highly aware of the student issues. Student perception and influence will drive business

Reduce negative impact on the “customers”

Use and report against SLA’s and ensure they are meaningful

Business/external peer evaluation

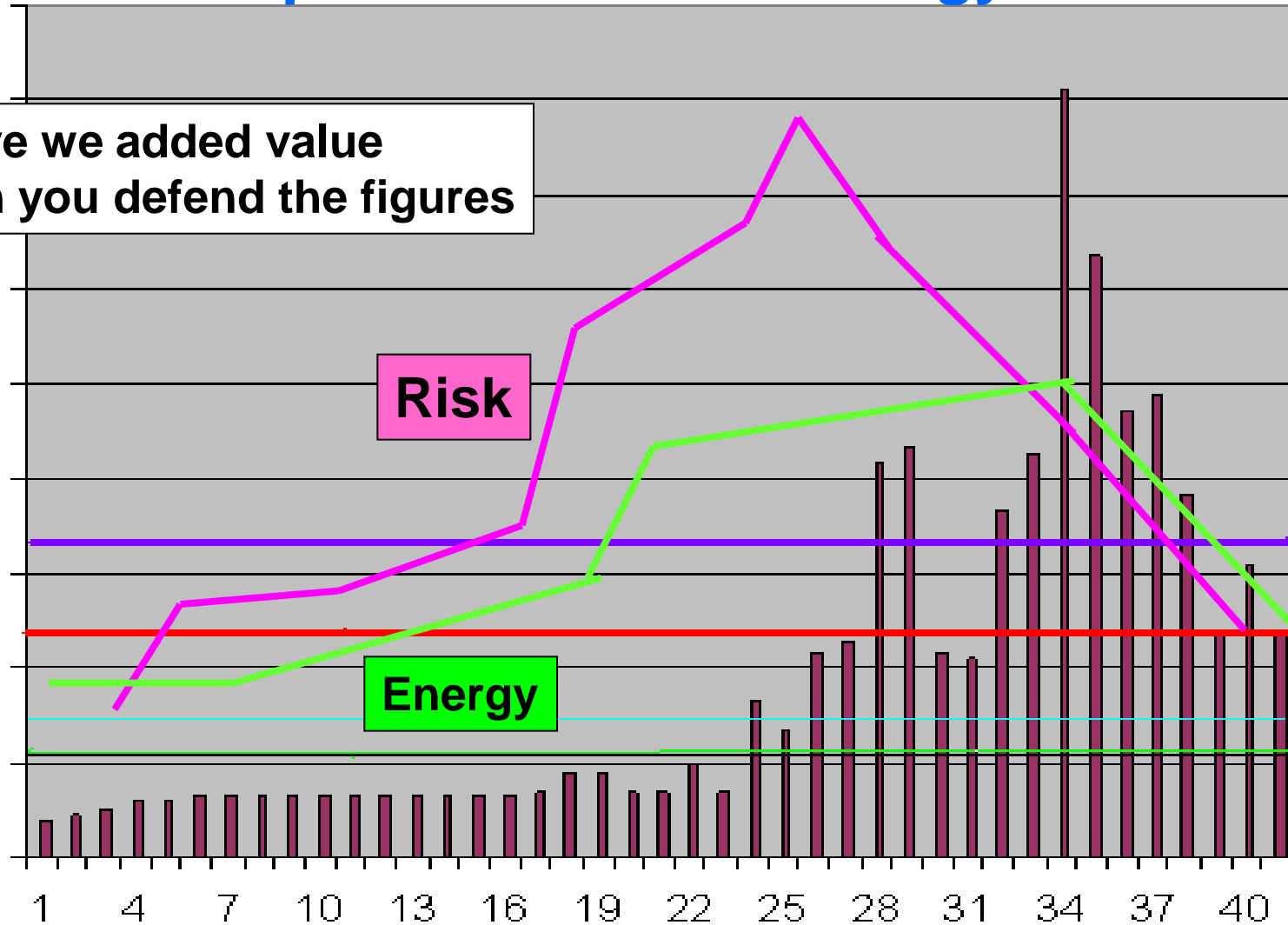
Reduce costs



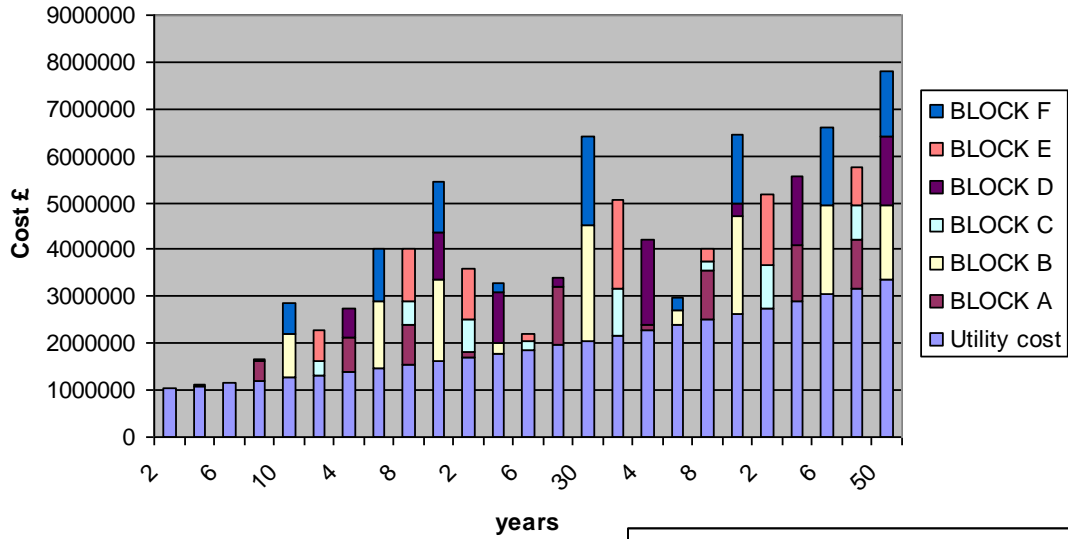
# Expenditure over 40 yrs

## Impact on risk and energy

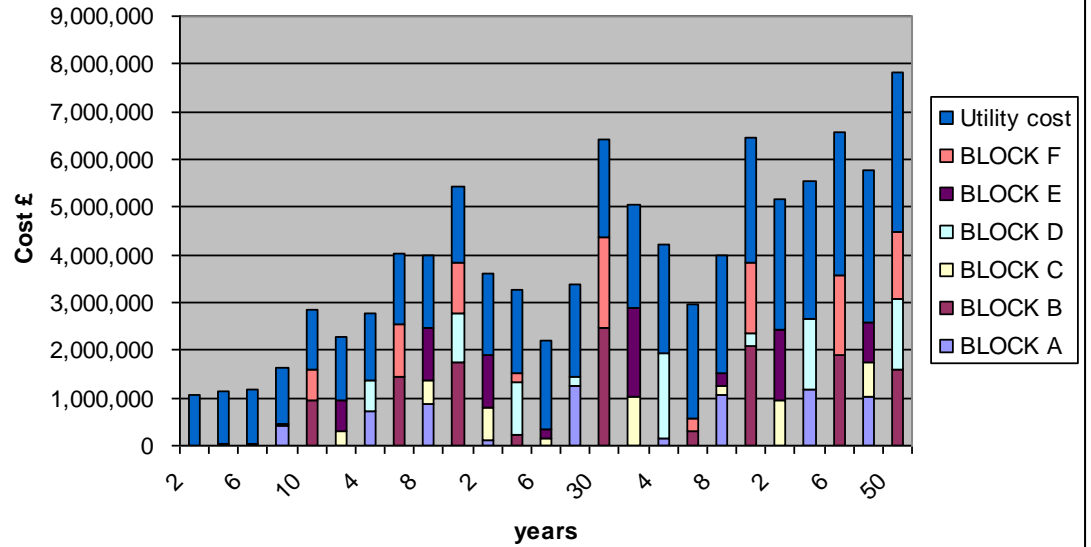
Have we added value  
Can you defend the figures



**Programed Maintenance and utility costs**



**Programed Maintenance and Utility Costs**



# What should we do next?

- Be at the centre of decision making
- Have and share a strategic view on issues – institutionally, nationally & internationally
- Demonstrate the impact of facilities and the estate (commercial impact - student recruitment)
- Embrace the web and social media. It means instant sharing – the good, the bad and the ugly ! Recognise and embrace this media. Use it positively.



- What your students, staff and visitors say matters
  - listen more intently than ever
  - Perception may be an issue
- Be transparent
- Be able to demonstrate your performance – know the numbers and statistics Measure it and report



# TEFMA - AUDE 2012

## Questions



**Thank You**



# Greening FE and HE 2012 Innovation and Sustainability

Theoretical expenditure for a building excludes the impact of Energy Carbon reduction and risk

## Choices

