

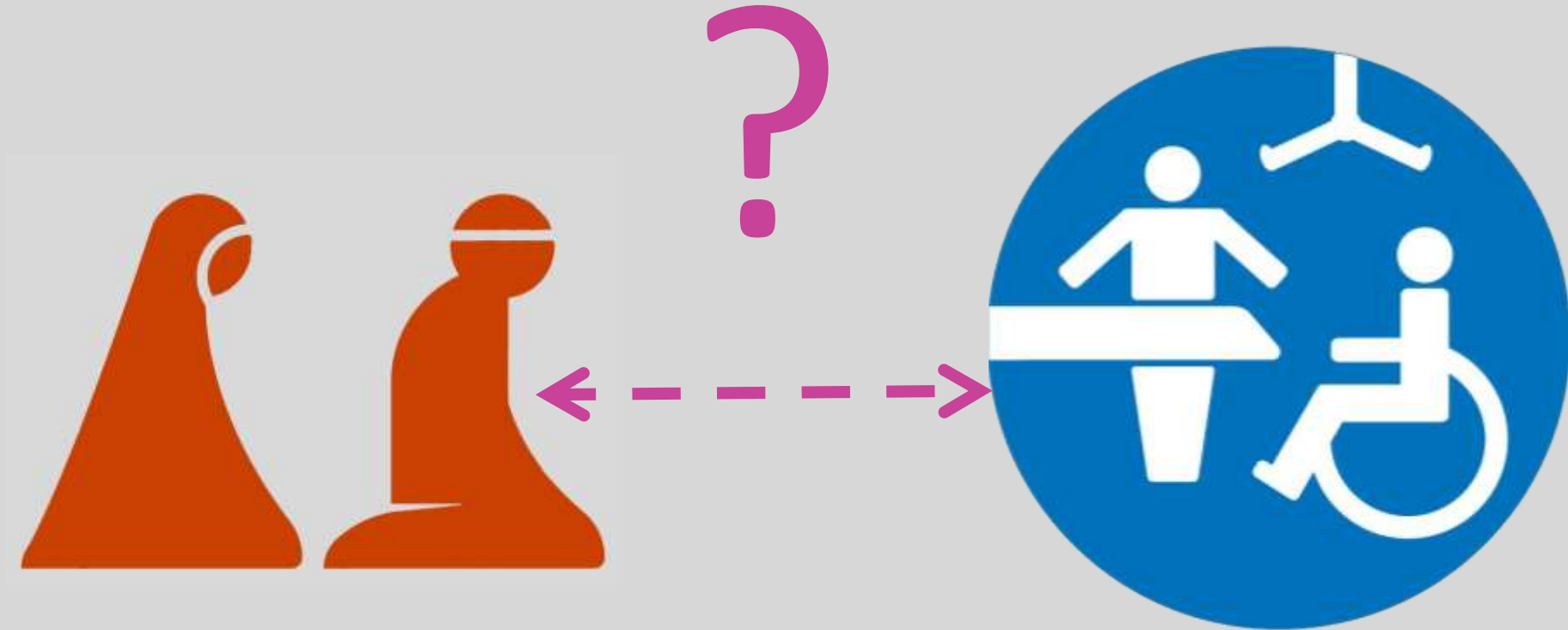
Mindful Masterplanning for Minorities



Muslim Prayer Room



Changing Places



Muslim Prayer Room

Changing Places



Changing Places



Muslim Prayer Room



Muslim Prayer Room



Changing Places



Sensory Rooms



Changing Places



Parent Rooms



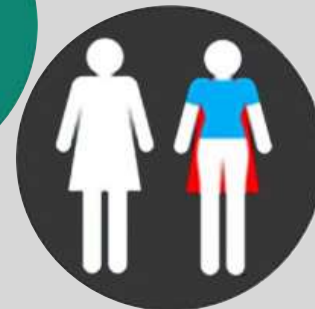
Refresh Spaces



Queer Rooms



Muslim Prayer Room



Women's Rooms



Multi-faith Rooms



All Gender Toilets




Teaching

A large grey circle containing a black icon of a person wearing a graduation cap (mortarboard) and a gown. To the right of the icon is the word "Teaching" in a bold, black, sans-serif font.

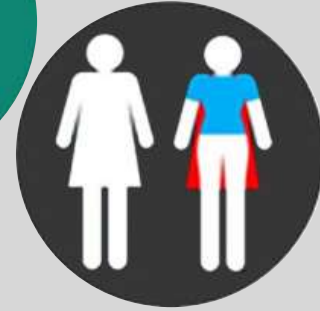
Research



Research

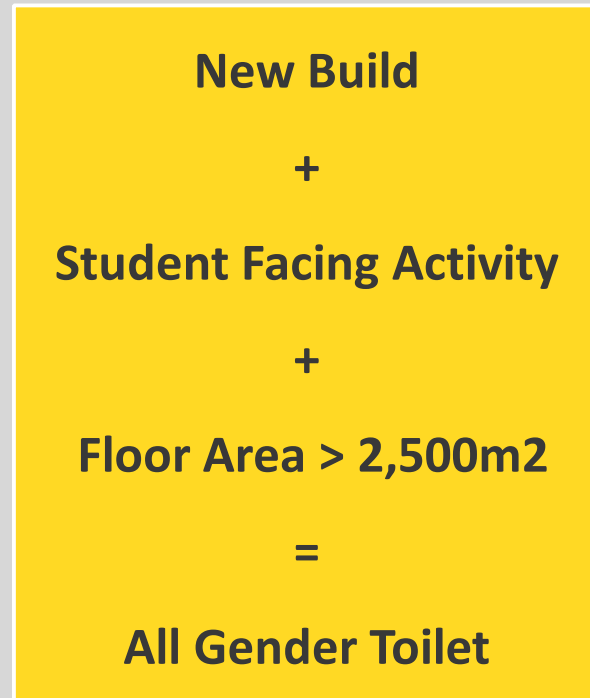
A large grey circle containing the word "Research" in a bold, black, sans-serif font. To the right of the text is a black icon of a lit lightbulb with three short lines radiating from it to indicate light.

Informal learning

A large grey circle containing a black icon of a human head in profile with a gear inside, symbolizing thought or learning. Below the icon is the text "Informal learning" in a bold, black, sans-serif font.

Workspace

A large grey circle containing a black icon of a computer monitor displaying a list with checkmarks. Below the icon is the text "Workspace" in a bold, black, sans-serif font.



All Gender Toilets

Social and meeting spaces



Women's Room



Queer Room



Burwood



Geelong Waurn Ponds



Geelong Waterfront



Warrnambool

Campus by area

27ha

Burwood

325ha Waurn Ponds

4ha

Waterfront

94ha Warrnambool



Domestic/international population

Burwood 73% domestic	27% international
Waurm Ponds 82% domestic	18% int'l
Waterfront 80% domestic	20% int'l
Warrnambool 97% domestic	4% int'l

Campus by population



Burwood 32,067

1,187 students per hectare

Waurnd Ponds 8,161

25 students per hectare

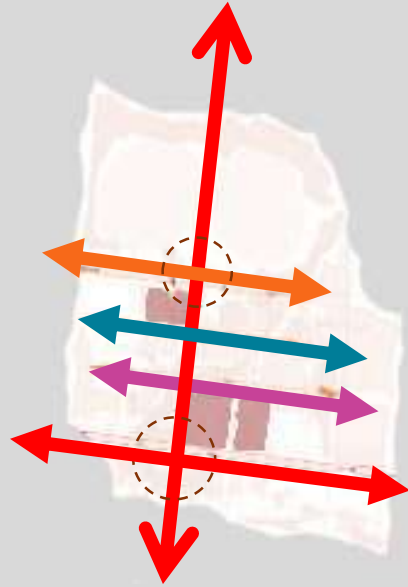
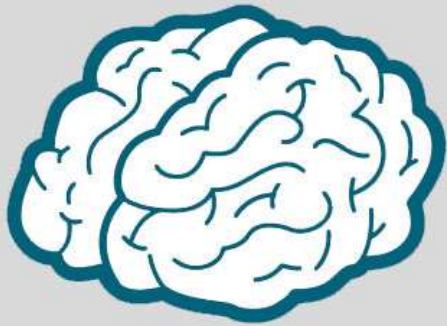
Waterfront 5,233

1,308 students per hectare

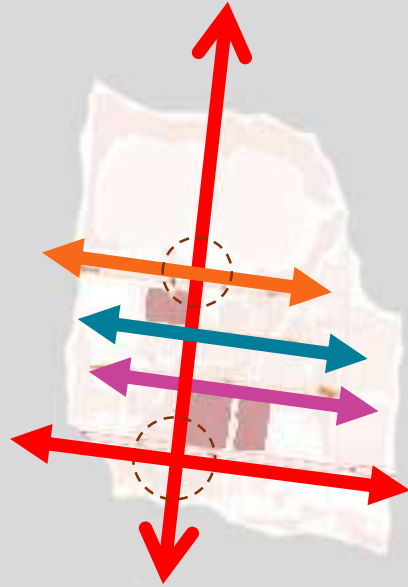
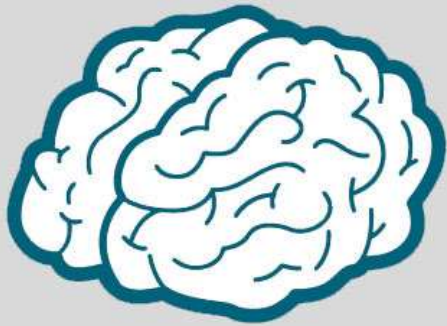
Warrnambool 595= 6 students per hectare



- **1 per campus?**
- **Per X population?**
- **Maximum travel distance or travel time?**
- **Clustered into a consolidated centre?**
- **Distributed along arterial pathways?**



Mindful Masterplanning for Minorities



Thank you.

Mindful Masterplanning for Minorities